

CERTIFIED LAND CORNER RECORDATION

DESCRIPTION OF CORNER EVIDENCE FOUND, AND ORIGINAL RECORD (if known)

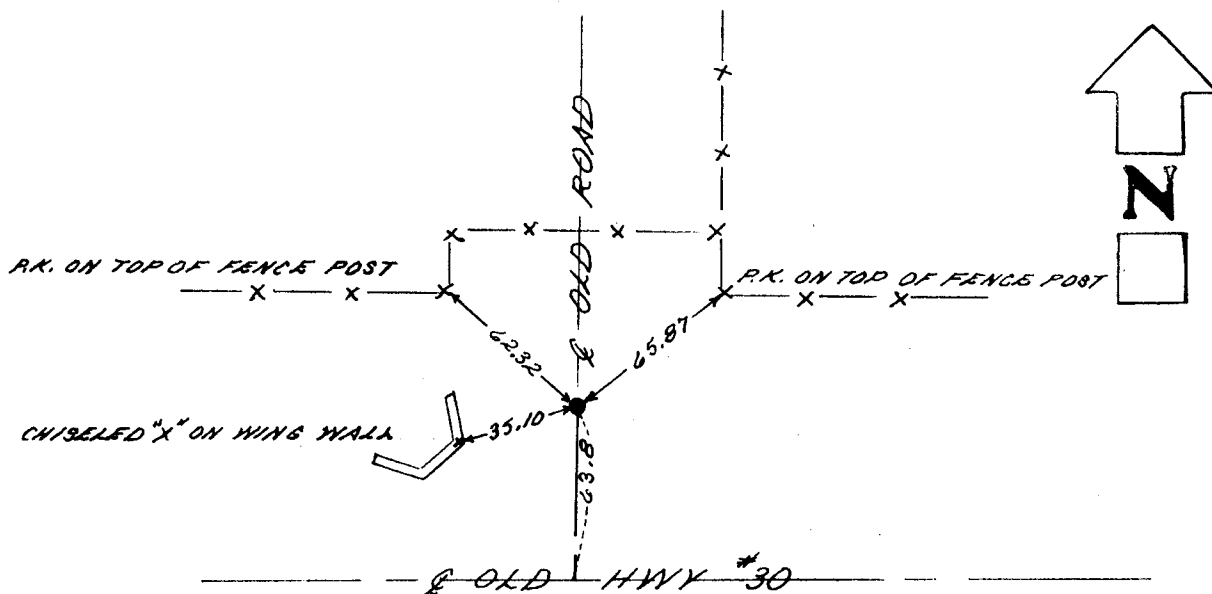
T.14N.
 20|21
 29|28
 R.64W.

SET: 5/8" x 18" REBAR WITH ALUMINUM CAP, STAMPED AS SHOWN BELOW,
 0.2' BELOW SURFACE, FROM W.H.D. R/W PLANS,

DESCRIPTION OF MONUMENT AND ACCESSORIES ESTABLISHED
 TO PERPETUATE THE ORIGINAL LOCATION OF THIS CORNER:

SEE TIES BELOW

SKETCH, WITH COURSE AND DISTANCE TO ADJACENT CORNER IF DETERMINED IN THIS SURVEY.
 (May Sketch or Paste Reproduction on Reverse Side.)



T.14 N.
 20|21
 29|28
 R.64 W.
 1984
 L.S. 2500

I, JOHN A. STEIL certify that I have carefully performed or reviewed the work done on the diagrammed corner as reported on this recordation form and approve the same.

John A. Steil
 Signature of Surveyor

L.S. 2500
 Registration No.

STATE OF WYOMING,
 Office of Clerk and Recorder,
 County of Sarassee

740 793

This "corner record" was filed for record on the APR 12 1984 day of APR 12 1984, 1984, was noted on the cross-index plat and is assigned page No. , in book No. .

| County Official | | | |
|----------------------------|---------------|---------------|-----------------|
| Cross Index No. <u>R-9</u> | T. <u>14N</u> | R. <u>64W</u> | Mer. <u>6th</u> |
| _____ | T. _____ | R. _____ | Mer. _____ |
| _____ | T. _____ | R. _____ | Mer. _____ |
| _____ | T. _____ | R. _____ | Mer. _____ |
| _____ | T. _____ | R. _____ | Mer. _____ |
| _____ | T. _____ | R. _____ | Mer. _____ |
| _____ | T. _____ | R. _____ | Mer. _____ |

R9 14-64